

SAFETY IMPACTS

MONEY AND LIVES

CFOI data is published annually with a one time revision approximately eight months after initial release. Below is based on the final count FY 2013.

COMMONWEALTH
XX
SCAFFOLD

MOST CITED VIOLATIONS

The Highest Cited OSHA Violations for Construction Standards



FALL PROTECTION

OSHA's top violation continues to be fall protection, including failure to use guardrails, safety nets, personal fall arrest systems; failure to protect open sides and edges and failure to cover holes.



SCAFFOLDING

72 percent of workers injured in scaffold accidents attributed the accident either to the planking or support giving way, or to the employee slipping or being struck by a falling object.



LADDERS

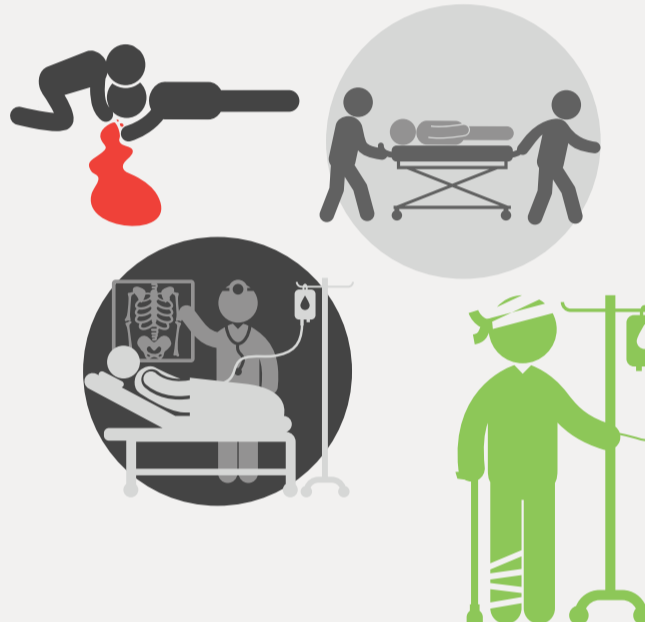
25 percent of injuries and fatalities due to falls are attributed to ladders. According to OSHA, the hazards include improper use of side rails, intended use of ladders, and defective ladders.

TOTAL FINES \$62,068,676

Duty to have fall protection	\$20,251,478
General requirements	\$8,272,642
Ladders	\$4,110,119
Requirements for protective	\$2,678,288
Asbestos	\$2,011,710
Eye and face protection	\$1,863,158
Specific Excavation Requirements	\$1,827,667
Training requirements	\$1,726,332
Aerial Lifts	\$1,589,094



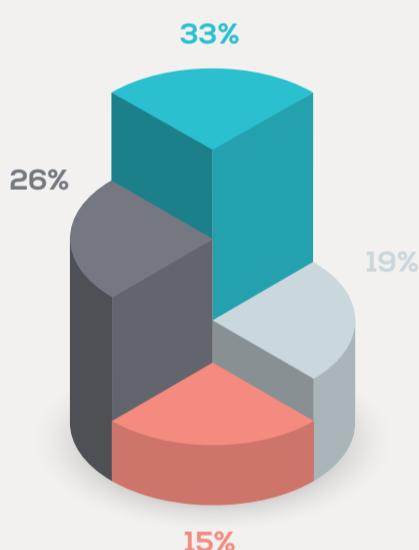
THE COST OF INJURIES



HIGHEST FATALITIES

Top 4 In The Construction Field

150 workers die each day in America on the job or from a work-related illness and one in five worker deaths were in construction. In 2013, 734 decedents were identified as contractors, above the 715 reported in 2012. Workers who were working as contractors at the time of their fatal injury accounted for 17 percent of all cases in 2013.



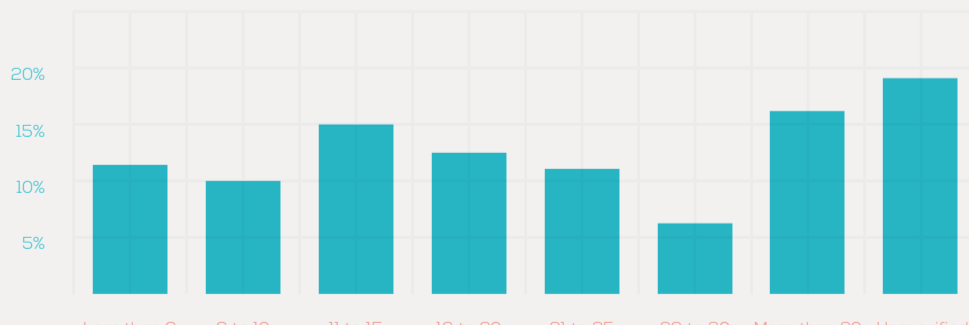
59% FROM TOP 2 ALONE

Falls and being struck by objects account for 59% of all fatalities on the jobsite.



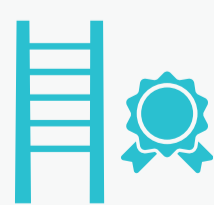
FATAL FALLS TO LOWER LEVEL

By height based on the total fatalities of 574.



REDUCE WORKPLACE INJURIES

Because injuries occur easily on construction job sites, it's important for employers to work to reduce workplace injuries.



Use Safety Oriented Subcontractors



Inspect Ladders and Scaffolding



Provide Adequate Safety Gear



Proper Training of Employees

COMMONWEALTH
XX
SCAFFOLD

Source: U.S. Bureau of Labor Statistics Census of Fatal Occupational Injuries (<http://www.bls.gov/if/oshcfoi.htm>) and OSHA Data and Statistics (<https://www.osha.gov/oshstats/index.html>)
Icon authors are: Freepik (freepik.com), OCHA (unocha.org), SimpleIcon (simpleicon.com), Icons8 (icons8.com) and Zurb (zurb.com). Infographic design by: Commonwealth Scaffold (commonwealthscaffold.com)

